

MARINE



ABERGELDIE
COMPLEX INFRASTRUCTURE



HEB Construction

MARINE

Sustainable infrastructure in fragile coastal and marine environments.

The Abergeldie-HEB Joint Venture brings together the Australian and New Zealand resources and experience of two award-winning marine and civil contractors offering:

- Financial strength,
- More than 500 multi-disciplined project management and construction personnel,
- Sophisticated third-party-accredited management systems,
- In-house owned and operated marine construction equipment,
- Specialist supplier networks on both sides of the Tasman, and
- Innovation and reliability to meet complex project challenges.

The Joint Venture's projects are managed from regional offices and plant depots in Sydney, Newcastle, Canberra, Brisbane and Townsville in Australia, and Auckland, Tauranga, Hamilton, Christchurch and Blenheim in New Zealand, with a steel fabrication factory in Sydney and a precast facility in Tauranga.

Lucinda Bulk Sugar Terminal (North QLD, Australia) from the shore.

SEA WALLS

Balmain Sea Walls (Sydney, Australia)

Construction of new sea walls for the Water Police Headquarters on Sydney Harbour, including installation of driven piles, concrete headstocks below low tide level, precast sea wall panels and repairs to existing seawalls including formwork, concrete and pressure grouting.



Scarborough Fisherman's Jetty Redevelopment (Brisbane, Australia)

Removal and reinstatement of 150m armoured rock sea wall, new drilled foundations and retaining walls to stabilise a failed road embankment at the water's edge. The works were conducted above and below the tidal water line.



WHARVES



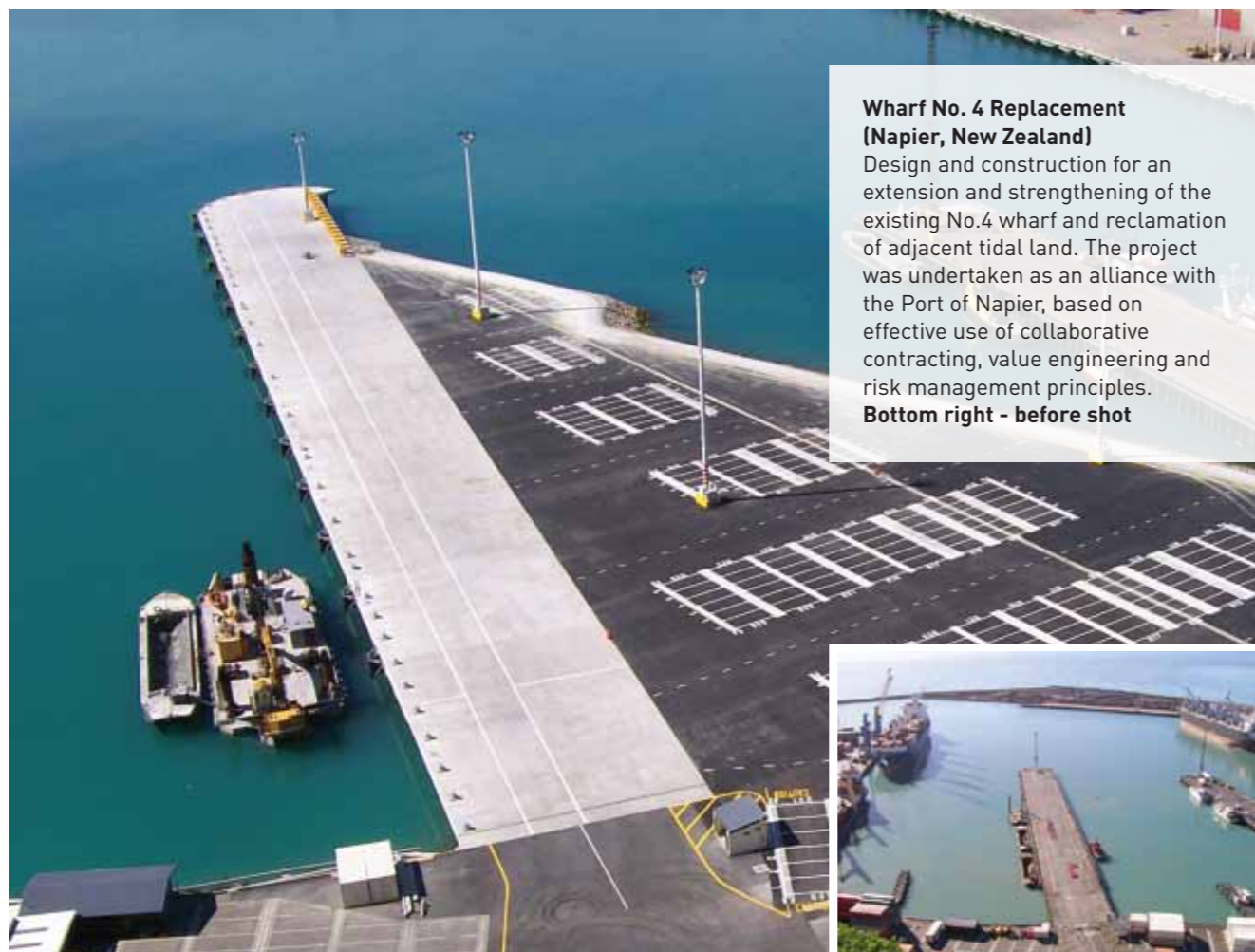
Cashin Quay No.1 (Lyttelton, New Zealand)

Design and construction of repair and development works to the coal exporting facilities at Cashin Quay No. 1 Wharf, following the earthquakes of September 2010 and February 2011. The works included temporary support of the wharf and coal loader to keep it operational whilst the new works were completed. New concrete foundations and seawall slabs were constructed and extensive piling and headstock work was undertaken to re-connect the new structure with areas of reclamation.



Oxley Wharf (Brisbane, Australia)

Refurbishment of the floating wharf and ferry landing at Riverside Rocks on the Brisbane River, including repairs to corroded reinforcement, approach road works, hand rails, steel walkways, embankment stabilisation and rock anchors.



Wharf No. 4 Replacement (Napier, New Zealand)

Design and construction for an extension and strengthening of the existing No.4 wharf and reclamation of adjacent tidal land. The project was undertaken as an alliance with the Port of Napier, based on effective use of collaborative contracting, value engineering and risk management principles.

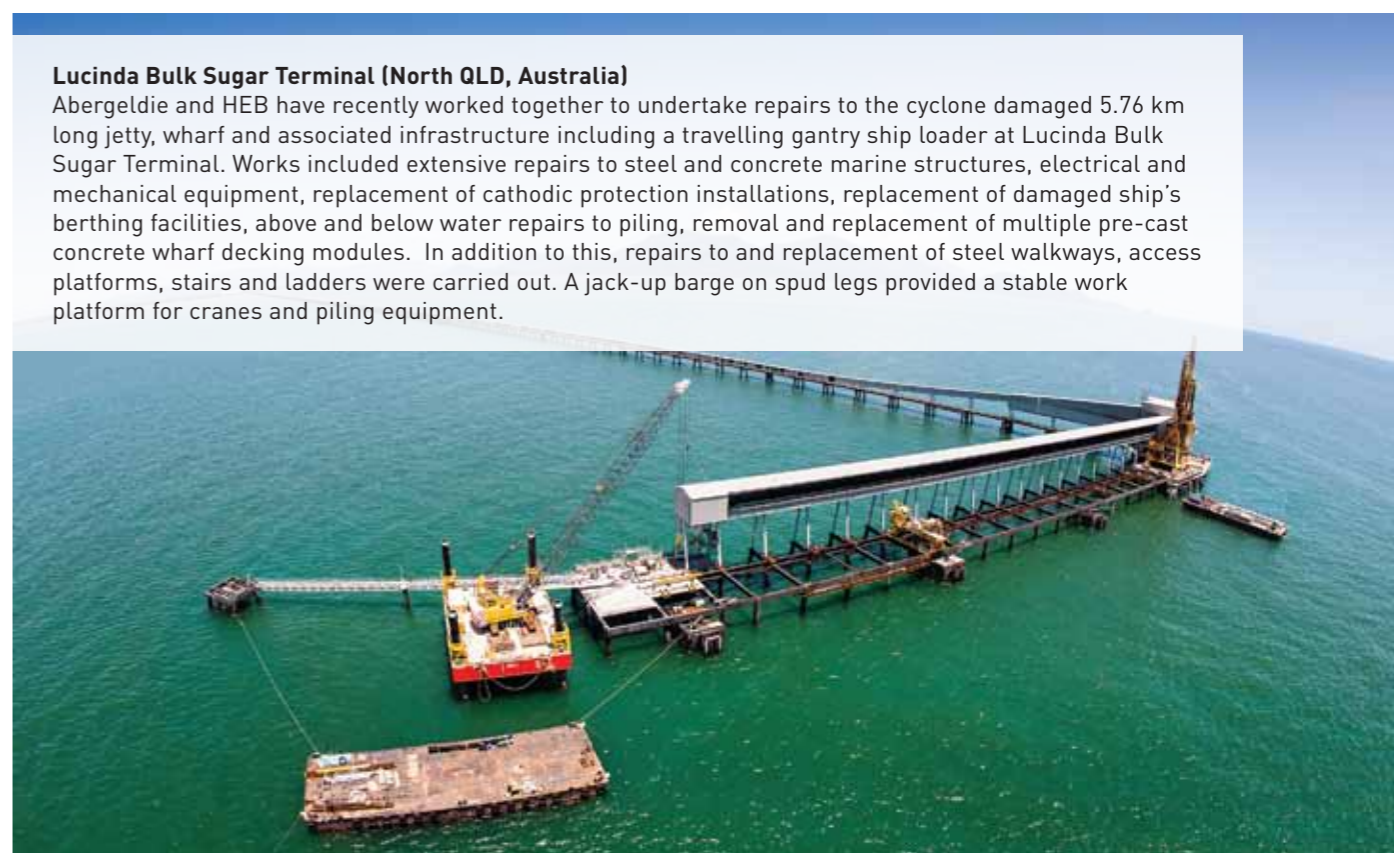
Bottom right - before shot

The Abergeldie- HEB Joint Venture brings together the Australian and New Zealand resources and experience of two award-winning marine and civil contractors



Sulphur Point Wharf Development Ext No. 2 (Tauranga, New Zealand)

Design and construction of a 170m long berth extension to the busy Sulphur Point Container Terminal. Work includes extensive piling operations, the construction of marginal embankments and concrete pavements, a mooring dolphin and associated services.



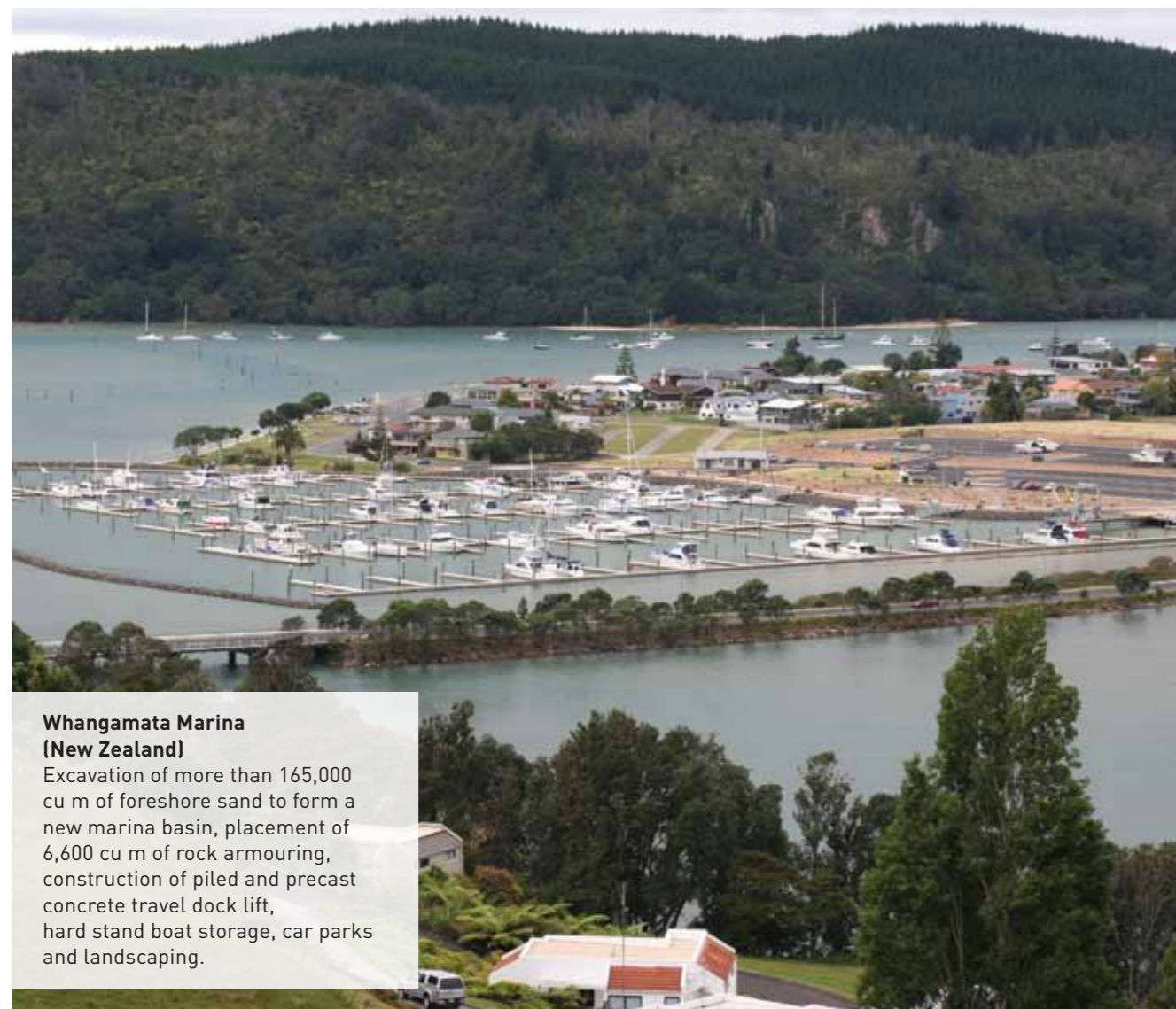
Lucinda Bulk Sugar Terminal (North QLD, Australia)

Abergeldie and HEB have recently worked together to undertake repairs to the cyclone damaged 5.76 km long jetty, wharf and associated infrastructure including a travelling gantry ship loader at Lucinda Bulk Sugar Terminal. Works included extensive repairs to steel and concrete marine structures, electrical and mechanical equipment, replacement of cathodic protection installations, replacement of damaged ship's berthing facilities, above and below water repairs to piling, removal and replacement of multiple pre-cast concrete wharf decking modules. In addition to this, repairs to and replacement of steel walkways, access platforms, stairs and ladders were carried out. A jack-up barge on spud legs provided a stable work platform for cranes and piling equipment.

DRY DOCKS / MARINAS

Garden Island Dry Dock (Sydney, Australia)

Refurbishment of the naval base No.2 floating caisson, including repairs to and replacement of an extensive network of pipework and valve systems on and below deck for the flood and pump-out mechanisms.



Whangamata Marina (New Zealand)

Excavation of more than 165,000 cu m of foreshore sand to form a new marina basin, placement of 6,600 cu m of rock armouring, construction of piled and precast concrete travel dock lift, hard stand boat storage, car parks and landscaping.

Lucinda Bulk Sugar Terminal (North QLD, Australia)
Works in progress



Abergeldie Offices

Sydney (Head Office)

1/5 George Young St
PO Box 10
Regents Park NSW 2143
P: +61 (2) 8717 7777
F: +61 (2) 8717 7718

Brisbane

97 Old Toombul Rd
Northgate QLD 4013
PO Box 135
Banyo QLD 4014
P: +61 (7) 3621 0000
F: +61 (7) 3621 4100

Newcastle

1/16 Huntingdale Dr
PO Box 326
Thornton NSW 2322
P: +61 (2) 4966 3899
F: +61 (2) 4966 3859

Canberra

1/92 Hoskins St
PO Box 56
Mitchell ACT 2911
P: +61 (2) 6241 1755
F: +61 (2) 6241 0712

Townsville

1/13 Civil Rd
PO Box 7264
Garbutt QLD 4814
P: +61 (7) 4771 9700
F: +61 (7) 4728 6313

HEB Offices

Auckland (Head Office)

Firth St
PO Box 226
Drury, Auckland 2247
P: +64 (9) 295 9000
F: +64 (9) 295 9881

Tauranga

21 Aerodrome Rd
PO Box 4049
Mount Maunganui South
P: +64 (7) 575 2325
F: +64 (7) 574 3931

Christchurch

307 Flaxton Road
Rangiora
Christchurch 7691
P: +64 (3) 313 7601
F: +64 (3) 313 7020

mail@abergeldie.com

www.abergeldie.com

www.heb.co.nz